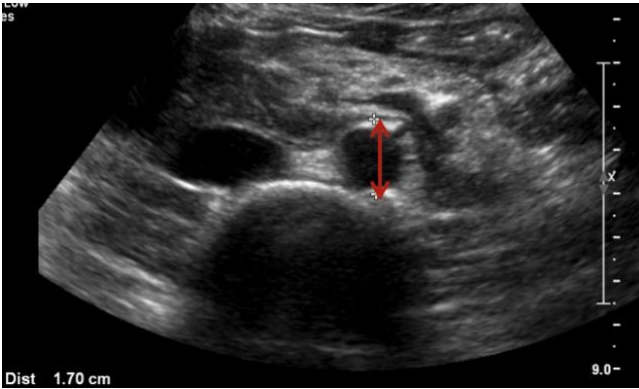


AAA

Scan aorta transversely from diaphragm to bifurcation.

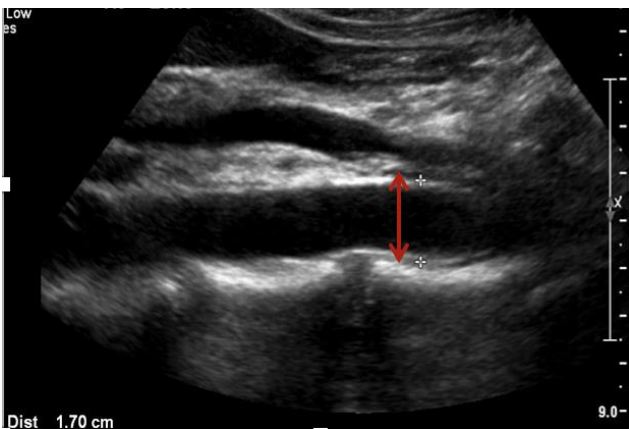
Save images at level of maximum diameter.

AAA defined as >3cm AP diameter



1. Aorta Transverse View

- Labelled **AORTA TRANS**
- Measurement of AP diameter (OUTER to OUTER wall)

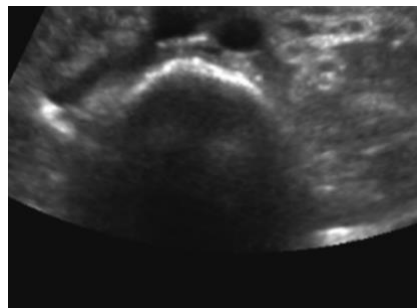


2. Aorta Longitudinal View

- Labelled **AORTA LONG**
- Measurement of AP diameter (OUTER to OUTER wall)



Proximal Aorta Anatomy



Bifurcation into Iliac Arteries



Longitudinal Aorta Anatomy

Image Sets

Minimum 2 Still Images

2-4 images

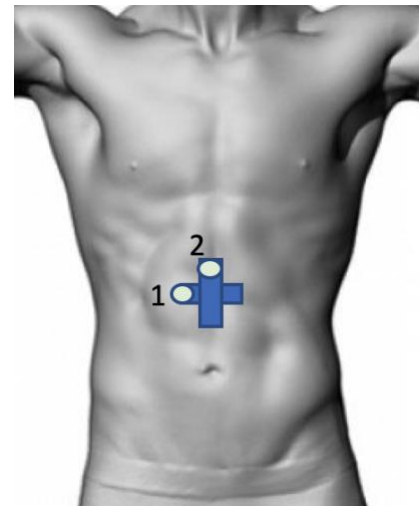
Optional extra views- Proximal + Distal

Machine Settings

CURVILINEAR Probe

ABDO setting for all images

Penetration mode for obese/ gassy patients
(as well as graded compression)



Documentation – Pocus AAA

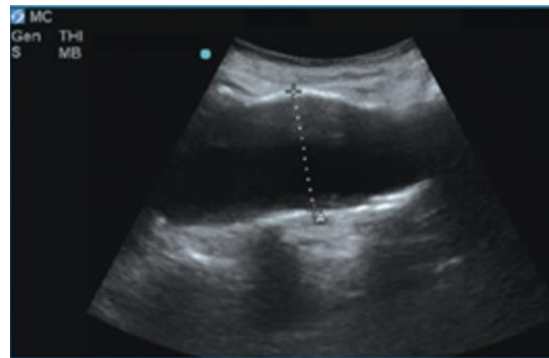
Views: Adequate/ Inadequate

Findings: Negative / AAA (+/- thrombus)

Positive Findings (always consider clinical context)



AAA on Transverse View with mural thrombus



AAA on Longitudinal View



AAA with intramural haemorrhage and dissecting thrombus



AAA on Longitudinal View with mural thrombus