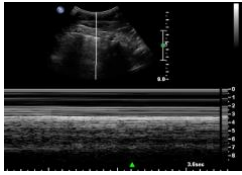
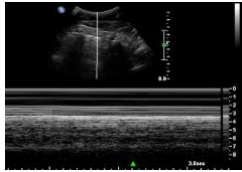


eFAST



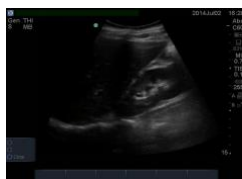
1. Rt Chest view

- Labelled **RIGHT**
- Longitudinal view
- Demonstration of lung sliding with M-mode



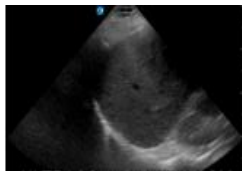
2. Lt Chest view

- Labelled **LEFT**
- Longitudinal view
- Demonstration of lung sliding with M-mode



3. RUQ view

- Labelled **RUQ**
- Longitudinal view
- Demonstration of the inferior hepatorenal interface (Morrison's Pouch) + inferior liver tip



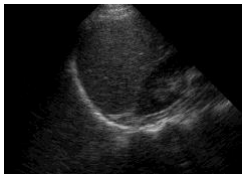
4. RUQ view 2

- Labelled **RUQ**
- Longitudinal view
- Demonstration of R lung base



5. LUQ view

- Labelled **LUQ**
- Longitudinal view
- Demonstration of the splenorenal interface



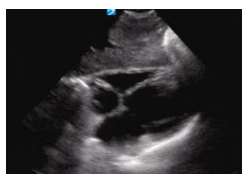
6. LUQ view 2

- Labelled **LUQ**
- Longitudinal view
- Demonstration of L Lung Base



7. Pelvis view

- Labelled **PELVIS**
- Longitudinal view
- Females: Demonstration bladder, uterus, Pouch of Douglas & rectum. Males: bladder, prostate & rectum



8. Subxiphoid view (or Parasternal Long Axis)

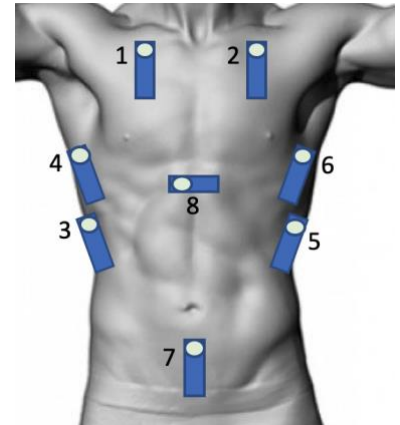
- Labelled **SUBX** (or PLAX)
- Transverse view
- Demonstration of the pericardium

Image Sets

Minimum 8 Still Images

8-12 images

Optional extra views including Pelvis Trans



Machine Settings

CURVILINEAR Probe. But can change to optimise image.

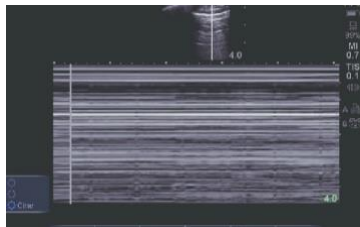
ABDO setting for all images

Documentation – Pocus eFAST

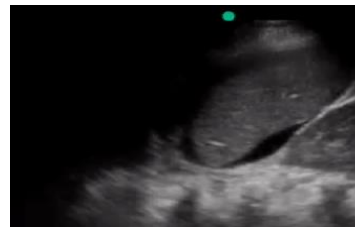
Views: Adequate/ Inadequate

Findings: NAD / eFAST +ve (Free fluid/ Pneumothorax/Pericardial Effusion/ Pleural Effusion)

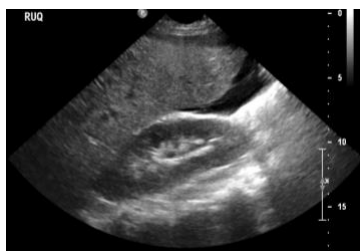
Positive Findings (always consider clinical context)



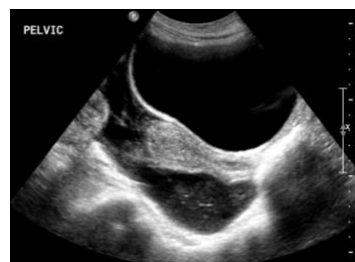
Chest
PTx
Barcode Sign



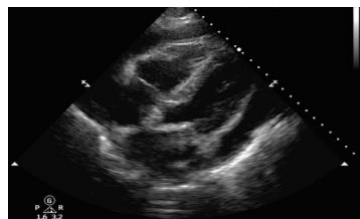
LUQ
FF



RUQ
FF



PELVIS
female
FF



SUBX
Pericardial
Effusion



PELVIS
Trans
FF